

Main Features:

The Komply™ RGB amplifier is designed to receive and amplify PWM (Pulse Width Modulation). With the addition of an RGB amplifier, the number of connected LEDs can more than double.

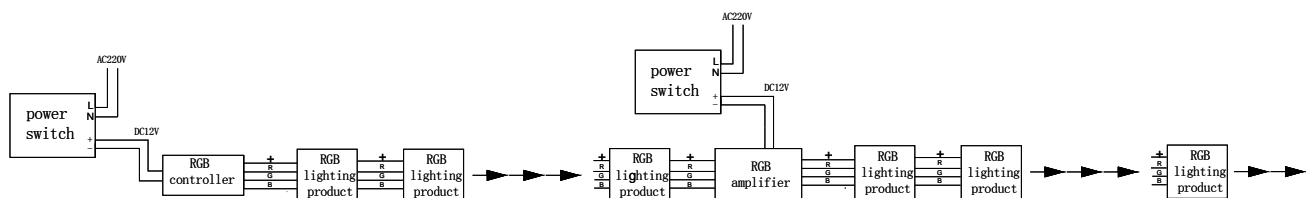
Specifications:

- Working temperature: -4-140°F
- Supply voltage: DC12V
- Output: 3 channels
- Connection: common anode
- External dimension: 4.14 x 2.26 x 1 inches (105 x 65 x 25mm)
- Weight: 145g
- Static power consumption: <1W
- Output current: <4A (each channel)
- Output power: 12V:<144W

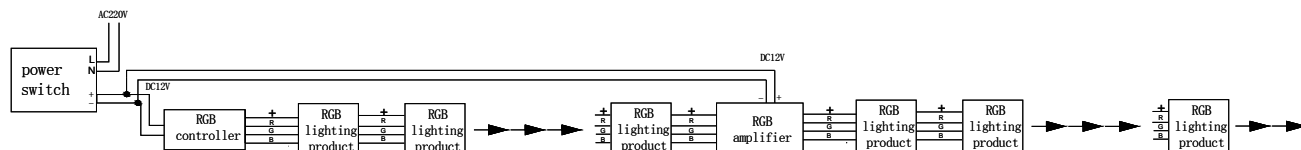
Direction for Use:

- 1.) According to the prompts printed on the casing of the RGB amplifier, connect the input and output signal wires in order to ensure short circuit does not occur between wires.
- 2.) Connect power for the RGB amplifier.

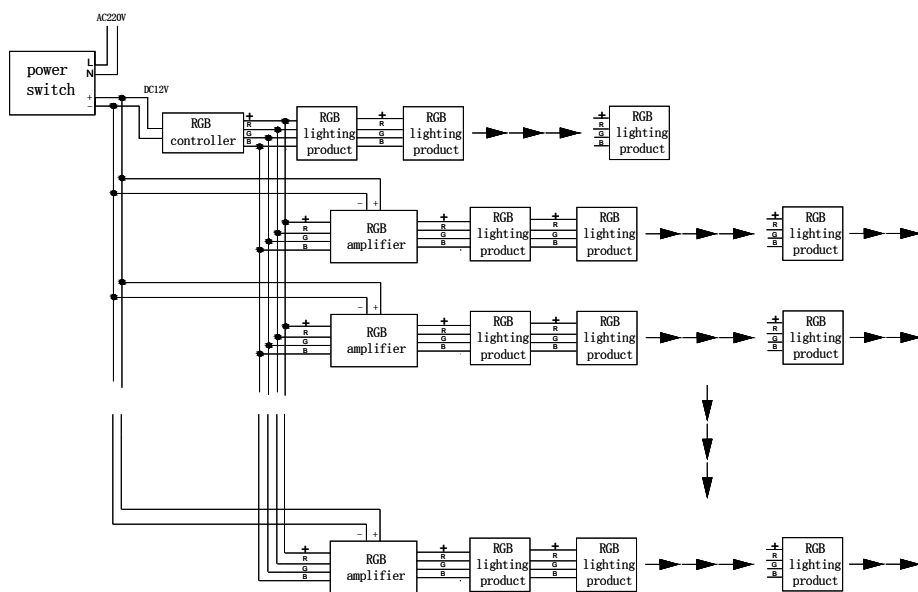
1.) Serial connection, two or more power switches.



2.) Serial connection, one power switch.



3.) Parallel connection, one power switch.



4.) Parallel, two or more power switches.

