



# Color Force

## - Mighty Output LED Batten



### Mighty Output

The Color Force offers extreme light output, lighting an 8m / 26ft drop cyclorama in your choice of colour.

Optional accessories include a Cyc lens plate for up to 5m / 20ft drop and a Border lens plate for general purpose wash applications.

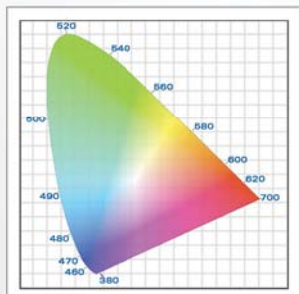
Opposite demonstrates the Color Force output compared to a traditional 1kW cyc flood. Identical camera settings were used in the comparative photos.

The new Chroma-Q™ Color Force™ LED batten range is a brute of a light. The super bright fixture easily washes up to 8m / 26 ft. In addition, our advanced ColorSure™ RGBA colour and control management technologies together give you a radically increased colour palette, enhanced colour consistency, a high CRI of 92 and theatrical grade dimming, all in the same fixture.



Color Force Output

Traditional 1kW Cyc Flood Output



### Power across the Spectrum

The Color Force offers massive output across the spectrum, ensuring both vivid saturates and subtle palette colours are available from a single fixture.

It provides a single fixture solution for concert touring, corporate events, exhibitions, TV and theatre.

The Chroma-Q RGBA engine has been developed to deliver an incredible CRI of 92, for true colour balance across the spectrum.

Each 1,000 lumen engine includes ColorSure technology for enhanced colour consistency across cells and fixtures.

### Optics

The Color Force custom optical design provides a smooth, uniform output with outstanding smooth colour blend across the spectrum.



### Practical & Mechanical

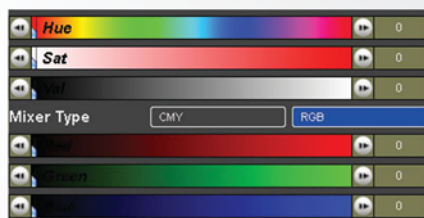
On the outside, the Color Force has been designed to provide maximum versatility and ease of use. The built-in power supply, hidden quick release fixings requiring no tools, and mains power / DMX in at the one and out the other provide fast deployment and simple cable management.

The Color Force also features stand-alone Master and Slave modes for additional usage possibilities, flat end plates for seamless wall-washing and a rugged extruded aluminium body.

### Key Features

- High CRI of 92
- Massive output across the spectrum
- Super bright fixture, easily washes up to 8m / 26 foot
- Theatrical grade dimming
- Radically increased RGBA colour palette
- Saturate and pastel colours available from a single fixture
- Extremely smooth, uniform wash
- Choice of 1.8m / 6ft (72) and 1.2m / 4ft (48) lengths

For the latest news and information on the Chroma-Q range, visit [www.chroma-q.com](http://www.chroma-q.com)



## Control

The Color Force features smooth, theatrical grade dimming and intuitive colour control for all console types. Advanced software enables industry standard 3 channel RGB and HSI control for each ColorSure light engine. A full range of flicker-free modes are also included.

## Effects

With separate RGBA control every 150mm / 6" and a comprehensive built-in effects engine, the Color Force offers new possibilities in cyclorama effects.



# Technical Specification

## Color Force 48 & 72 Specifications

<b>Product Code 48 / 72</b> (with Border lens kit) (with Cyc lens kit)	CHCF48NFRGBA / CHCF72NFRGBA CF48BDRRGA / CF72BDRRGA CF48CYCRGBA / CF72CYCRGBA	<b>Control Protocol</b>	ANSI E1.1 DMX-512A, XLR5 in / through
<b>Dimensions 48</b>	1,180mm x 180mm x 215mm / 46.5" x 7" x 8.5"	<b>Cooling System</b>	Forced - 2 fans
<b>Dimensions 72</b>	1,760mm x 180mm x 215mm / 69" x 7" x 8.5"	<b>Construction</b>	Black anodised aluminium extrusion
<b>Weight 48</b>	15kgs / 33lbs	<b>Built-In Hardware</b>	Quick release lever for tilt adjustment
<b>Weight 72</b>	22kgs / 48lbs	<b>IP Rating</b>	IP20
<b>Power 48</b>	100-240V AC, 50-60 Hz, 480W, PowerCon in / through	<b>CE</b>	Pending for EN55103-1 & 2
<b>Power 72</b>	100-240V AC, 50-60 Hz, 720W, PowerCon in / through	<b>Electrical</b>	Pending for IEC60950

## Control & Photometric

<b>LEDs 48</b>	8 RGBA cells x 24 LEDs, total 192 LEDs	<b>Variable Effects Engine</b>	Yes
<b>LEDs 72</b>	12 RGBA cells x 24 LEDs, total 288 LEDs	<b>Lumen Output (48 / 72)</b>	8,000 / 12,000 hot lumens (prelim.)
<b>Control Modes 48 / 72</b>	31 / 43 channels Fx HSI 24 / 36 channels HSI 24 / 36 channels RGB (*Magic Amber) 32 / 48 channels RGBA 33 / 49 channels sRGBI (*Magic Amber) 9 / 9 channels Fx HSI 3 / 3 channels HSI 3 / 3 channels RGB 4 / 4 channels RGBA 5 / 5 channels sRGBI (*Magic Amber) 1 / 1 channel DMX Look Select	<b>Optics</b>	Specialised close focus lens
<b>Dimming Curve</b>	Theatrical	<b>Beam Angle</b> (with optional Cyc lens) (with optional Border lens)	23° (approx.) 80 x 30° (approx.) 60° (approx.)
		<b>Beam Distribution</b>	Symmetrical direct illumination
		<b>CCT</b>	Adjustable 1,000 - 10,000K
		<b>CRI</b>	92
		<b>Colour Gamut</b>	Performance enhanced
		<b>Lamp Life</b>	L70 up to 50,000 hours

## Accessories

<b>CHCFBL48</b>	Border lens for 48	<b>CHCFBL72</b>	Border lens for 72
<b>CHCFCL48</b>	Cyc lens for 48	<b>CHCFCL72</b>	Cyc lens for 72

\*Magic Amber is the term used for the unit's ability to bring in amber when mixing colours that require it.

For the latest news and information on the Chroma-Q range, visit [www.chroma-q.com](http://www.chroma-q.com)