

## Stage Pin Devices

### 20A/125V Female Inline

# HUBBELL

## Ordering Information

Description	Device Color	UPC Number	Catalog Number
Compatible with installed base, Impact Resistant, ESTA Compliant 20A Stage Pin Devices	Black	783585539836	HBL20SPF

## Listings

cULus  
UL Enc Type 1  
ESTA Compliant

## Specifications

Housing Material	Nylon
Contact Material	Brass

## Performance

### Electrical

Amperage Rating	20A Maximum
Voltage Rating	125V Maximum

### Mechanical

Wire Range	#14/3 SJO - #10/3 SJO
------------	-----------------------

### Environmental

Moisture Resistance	UL Enclosure Type 1
---------------------	---------------------

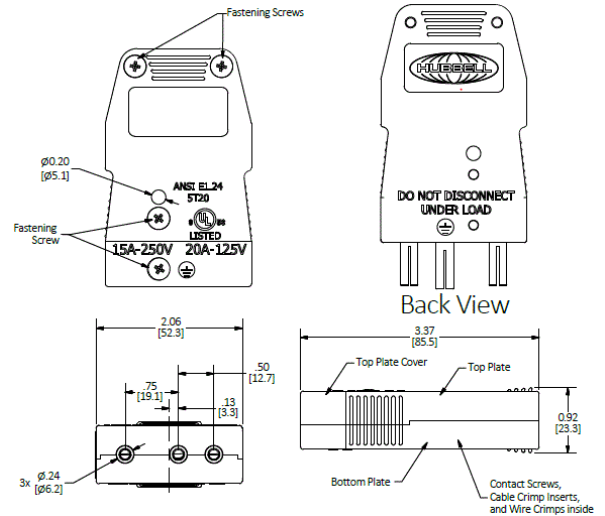


## Single Cable Sets and Breakouts in One Device

Device	Cable Combination	Device	Cable Combination	
60A/125V	(3) #6 SC	100A/125V	(2) #4 SC	
	(6) #6 SC		(1) #6 SC	
	(2) #4 SC		(4) #4 SC	
	(1) #6 SC		(2) #6 SC	
	#8/3		(2) #2 SC	(1) #6 SC
	#6/3		#6/3 AWG	TYPE W
#4/3	TYPE W	#4/3 AWG	TYPE W	

## Online Resources

Customer Sales Drawing  
eCatalog  
Installation Instructions



Dimensions in Inches (mm)

Hubbell Wiring Device-Kellems • Hubbell Incorporated (Delaware) • 40 Waterview Drive • Shelton, CT 06484

Phone (800) 288-6000 • Fax (800) 255-1031 • Specifications subject to change without notice.

